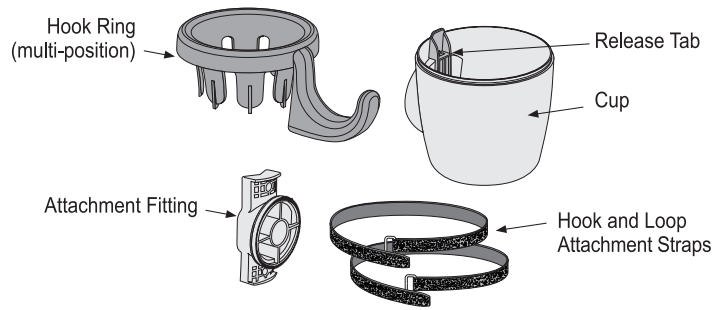


GymValet® THE SOLUTIONS ARE RIGHT AT HAND™

GymValet® is an easy-to-install bottle and towel holder that will accommodate most bottles up to 32 oz. in size.

For Optimum Installation Follow These Guidelines:

- Choose a location on the machine that will not impede the equipment's range of motion and permit convenient access.
- For added safety, install the GymValet where people will not walk into it (avoid narrow walkways).
- Attach the multi-position hook ring for optimal towel access (there are nine positions).
- Observe users and adjust placement, if necessary, to improve access. Remember, GymValet is easy to remove and reposition with no tools required.
- **Periodically check straps for tightness and positioning. Retighten and readjust as necessary.**



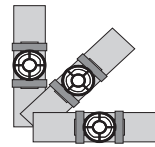
FOLLOW INSTALLATION INSTRUCTIONS CLOSELY

1 Mount attachment fitting

▶ To fitness equipment:

The attachment fitting will fit a variety of equipment frame shapes and angles.

* See also "Proper Strap Tightening" guidelines.

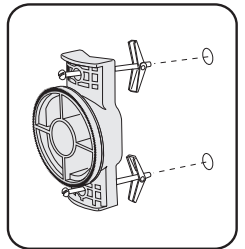


▶ To walls:

The attachment straps are not required for mounting the GymValet to a wall.

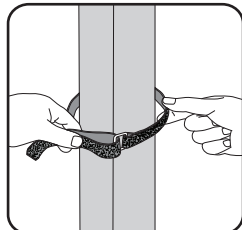
Hollow wall:

- Use two #6 toggle bolts (at least 3" long) through both mounting holes on the attachment fitting.
- Push toggle bolts into drilled holes and tighten.

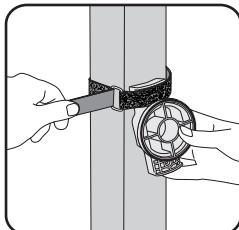


Into wood studs:

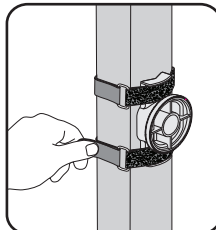
- Secure attachment fitting with two #6 round head screws (at least 2" long).



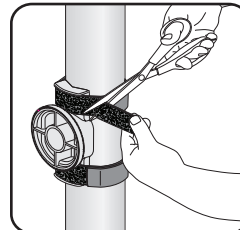
a) Loop one attachment strap around equipment, rubber side facing in.



b) Slide attachment fitting under strap and pull end of strap tightly back on to itself. Press hook and loop firmly together.



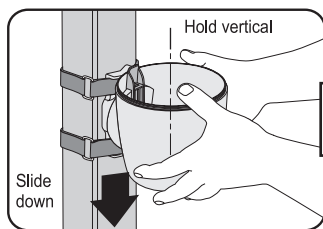
c) Attach other strap around bottom of attachment fitting.



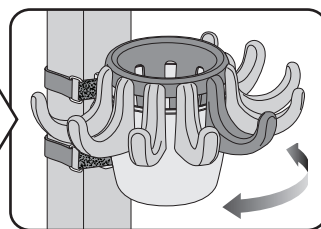
d) **Only if necessary**, cut excess strap with scissors.

NOTE: Retighten straps as necessary to achieve maximum tightness.

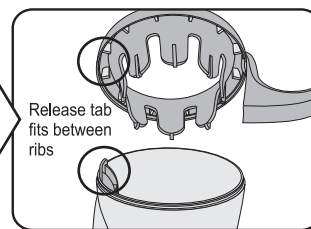
2 Mount cup and hook ring



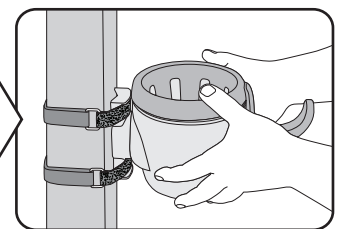
a) Hold cup vertical and slide over the attachment fitting until cup securely clicks into place.



b) Determine where the towel should hang. The GymValet's hook can be positioned for optimal towel access (nine possible positions).

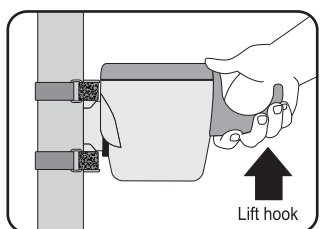


c) Place hook ring over cup, making sure the release tab is situated between ribs.

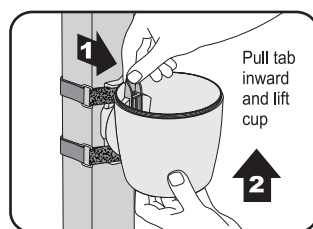


d) Push down on hook ring until it snaps securely in place **around the entire circumference.**

3 Remove



a) Remove hook ring by **gently** lifting up to unsnap from cup.



b) Pull release tab inward and lift cup.

From
B&D SPECIALTY CONCEPTS, INC.
Creative Solutions for Active People

GymValet®
THE SOLUTIONS ARE
RIGHT AT HAND™

For information or to reorder,
call toll free:
1-866-435-2009
or purchase online at:
www.GymValet.com